

ARMAD
ENGINEERING LTD
accurate precision

CONTENT

Introduction	01
Why Armad	02
Our specialisation	03
Areas served	04
Elements of engineering	07
Petroleum, Gas & Steel	08
Mining, Drilling & Construction Equipment	09
Didactic, Laboratory and Measuring systems	10

INTRODUCTION

Armad Engineering Limited is a UK based industrial service provider offering diversified engineering solutions, a wide range of technical products and customised solutions. While covering a diversified industrial segments, our aim is to help our customers to improve product performance and their overall system efficiency reducing overall operational costs.

Our strong links in the industry helps us source the right capital equipment, material, consumables and spare parts covering major engineering sectors including



Mining



Construction



Oil & Gas



Petrochemicals



Engineering and vocational institutes



Power Generation



Manufacturing & processing

Our team collectively bring decades of engineering knowledge, financial acumen and sales expertise, acquired through serving customers in various industrial sectors.

In any competitive market, we appreciate the need to offer an accurate, efficient and timely service to our customers which offer through special arrangements with logistics companies and freight forwarders. Over the years, we have developed a loyal customer base in Middle East and Africa.

WHY ARMAD?



A Balance Between Quality & Price

We offer affordable value-added systems which help you to save time, money and improve efficiency. We have worked closely with our partner manufacturers and suppliers in order to meet our customer's needs with the right balance of time, quality and price.

Being engineers, we understand the importance of time and accuracy required in our service and our aim is to fulfil your needs with great precision and accurate specifications

Competitiveness

The era we now face has new challenges with companies feeling the crunch of competitiveness and shrinking business globally. With this, came the communication age making the jobs of the procurement and project teams even more demanding. The decreasing cost of materials and machines has created greater demand to be on time. We help with this by offering suitable and affordable solutions.

Engineering Expertise

Our customers can rely on us for quality, price and product availability to keep the progress of their project and overall efficiency on track.

We are a team of engineers with practical experience, having being trained & worked in the global market where we have faced what our customers may be encountering today.

We consider ourselves as your partner and your success is our success.

OUR SPECIALISATION



Passion and dynamism



**Engineering based
specialist knowledge**



**Innovative and
creative solutions**



**Understanding and
implementing customer's
feedback**



**Strategic logistics
partnerships**

A professional service with a different approach.

AREAS SERVED

Engineering analysis

Electrical Instrumentation & controls

Mechanical instrumentation and controls

Transfer of force and power

Managing pneumatic & hydraulic pressures

Improving efficiencies

The ABB logo consists of the letters 'ABB' in a bold, red, sans-serif font. The background of the slide features a faint image of an industrial facility with tall distillation columns and a person in a white lab coat holding a yellow hard hat.The Schneider Electric logo features the company name in white text on a green rectangular background. A stylized 'E' logo is positioned below the word 'Schneider'.The SEW EURODRIVE logo features the word 'SEW' in large, bold, red letters, with 'EURODRIVE' in smaller, bold, red letters below it.The rexroth logo features the word 'rexroth' in a blue, lowercase, sans-serif font. Below it, the text 'A Bosch Company' is written in a smaller, blue, sans-serif font.The SIEMENS logo features the word 'SIEMENS' in a bold, blue, sans-serif font.The EMERSON logo features a stylized blue and white logo above the word 'EMERSON' in a blue, sans-serif font.The SKF logo features the letters 'SKF' in a bold, blue, sans-serif font, with a registered trademark symbol (®) to the right.The FLUKE logo features the word 'FLUKE' in a bold, black, sans-serif font, set against a yellow rectangular background.

ELEMENTS OF ENGINEERING

Compressed Air & Gas Solutions

Designing, supplying and supporting high quality compressed air systems ensuring long term reliability, and reduced running costs in line with your budget.

Refractory Products

Highest quality of refractories and knowledge coupled with being a leading source of R&D advancements.

Material Handling Equipment

Covering Transport, Positioning, unit load formation and storage

Cardox system

A system to quickly clear blockages, plugs and chokes in your pre heater towers, silos, kilns and bins

Silo cleaning system

providing a safe and effective bin and silo cleaning solution



Petroleum and Natural Gas

Covering Upstream, Mid Stream and Downstream

Lifting and Handling System

Instrumentation

Fittings & Flanges

Gaskets, Insulation Kits & Sheets

Well head, Industrial & Pipeline Valves

Steam Traps, Strainers & Pressure Regulators



Steel & Alloys

Covering special alloys and steel grades

Carbon Grades

Alloy Grades

Energy

Mining, Drilling & Construction Equipment

Drilling rigs and machines

Drilling consumables for Quarry & Underground mining

Over burden drilling

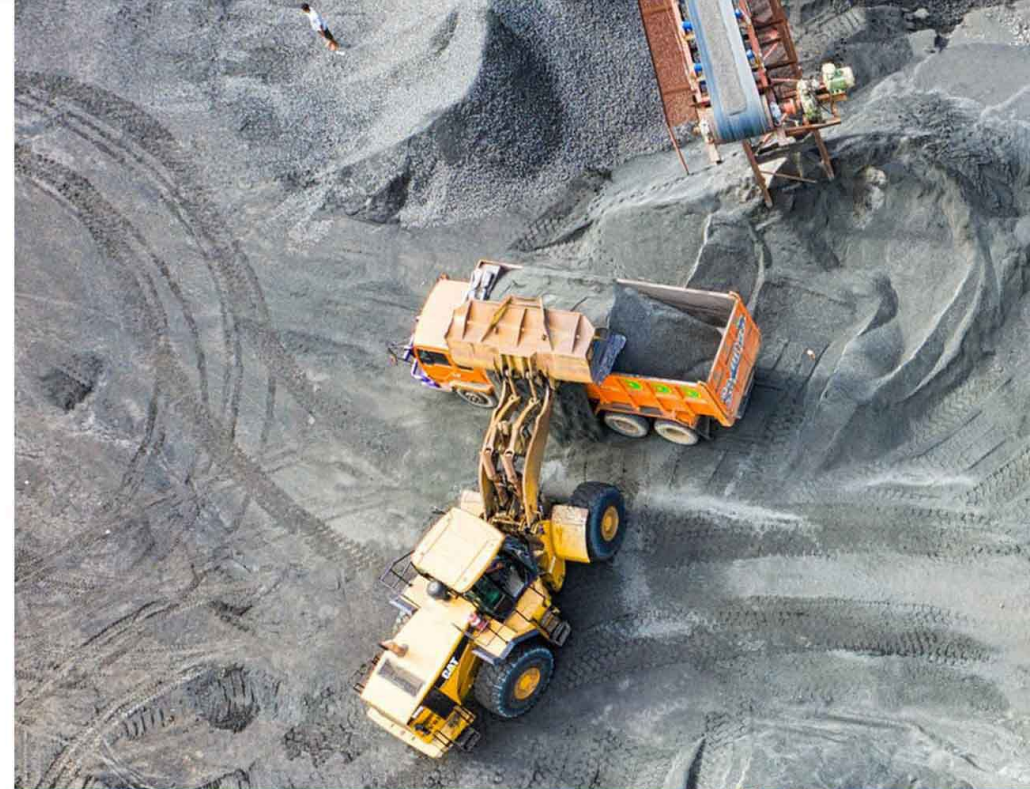
Pilot drilling systems for tunnelling

Geo technical and investigative drilling tools and consumables

Consumables for core drilling

HDD accessories and TBM Cutters

Spare parts for heavy earth moving machinery





Didactic, Laboratory and Measuring systems

Surveying tools and systems

Laser Measuring tools

Electrical systems analysis & measurement Industrial measurement systems

Environmental monitoring systems

Engineering and vocational teaching equipment, laboratories and systems.

Workshop tools

Power tools

Hand tools

Welding systems and consumables



HSE & Safety Gear

PPE – personal protective equipment

Labelling equipment Safety gear including Overalls, gloves & shoes

Safety equipment, safety cabinets, safety bins

Safety Barriers

Avelair
compressed air solutions



Tamturbo
JUST AIR



HADEF

ARMAD ENGINEERING LIMITED

Suite H2 | The Courtyard | Earl Road | Cheadle Hulme SK8 6GN | United Kingdom.

Tel. +44 (0) 161 465 7886 & 533 0755 | Email: sales@armadengineering.co.uk |

www.armadengineering.co.uk

Bin Zahran Al Masya, P.O.Box 700, P.C 111

Azaiba, Muscat, Sultanate of Oman

Mob. +968 9981 1628

Mob. +968 7154 0426

612, High Q Tower Gulberg-V,

Jail Road, Lahore, Pakistan.

Tel. +92 42 34004614

Mob. +92 321 2152021